



Trusted  
Dedicated  
Innovative

### Right From the Start...

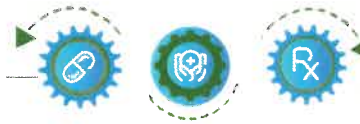
Started in 2007 by Kyle Janssen, owner and President, he believed resident care was at the core of medication management for long-term care facilities. As an independently owned pharmacy, we have the flexibility to adapt to our facility partners needs in an ever-evolving healthcare industry.

A forward thinking pharmacy, Community Pharmacy is dedicated to doing what is right - taking care of facility partners and their residents. We continue to uphold our Midwestern values by focusing on patient safety, customer service, and medication management accuracy.

For more information and to learn how we can support your pharmacy needs, contact Community Pharmacy at 1 (877) 862-0397.



21689 Northstar Drive  
Gretna, NE 68028  
1 (877) 862-0397  
fax 1 (844) 596-1448  
[www.cpharmrx.com](http://www.cpharmrx.com)



Your Long-Term Care Pharmacy Partner





## Community Pharmacy Services

- Providing Medication to Long-Term Care Facilities
- Emergency & First Dosage Solutions
- Infusion Therapy Services
- Pharmacy Consulting
- Interfacing Capabilities & eMARS
- Dedicated Nurse Educators
- Dedicated Billing Representatives
- Open 7 days a week, available 24/7/365

## Services Designed Around You & Your Resident's Care

Community Pharmacy revolutionized the long-term care industry through innovative technology and personal, dedicated service. Working with us will allow you focus on what matters - resident care.

Our pharmacy experts will become a part of your own team as you secure the vision of successful medication management for your residents. Our pharmacy team is able to deploy the right services, at the appropriate level, and at the right time to maximize efficiencies and minimize costs.

## Who We Serve



Mackenzie, PharmD



“Community Pharmacy  
partnered with  
us to improve  
the quality of care  
for our residents.”

- Chris, Director of Health Services,  
Heritage Communities





## CUSTOMER CARE TEAM: A CRITICAL ROLE IN OUR PRESCRIPTION ORDER WORKFLOW



### ORDER ENTRY TECHNICIANS

Certified and licensed technicians ensure all prescription orders are received and correctly entered.



### PHARMACISTS: 1ST REVIEW

A dedicated team of pharmacists ensure resident's prescriptions are accurate and safe. They are integral in advising about medicines, including how to take them, what reactions may occur and answering LTC healthcare professionals questions.



### BILLING SPECIALISTS

Trained specialists manage all billing activities including analysis, monitoring, reporting and billing adjustments to ensure accurate, timely billing on behalf of residents.

“Each step in the prescription order workflow relies on our dedicated Customer Care Team to ensure residents safety.”

Kyle Janssen, Founder & President



### COMMUNITY PHARMACY CUSTOMER CARE TEAM

### WE WILL:

- Increase accountability.
- Ensure accurate prescription orders.
- Reinforce strong communications with each team and our facility partners.



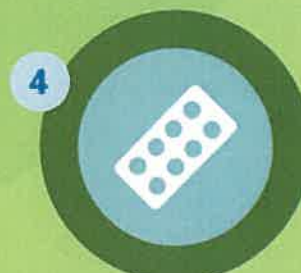
### DELIVERY TEAM

Medication totes are checked, scanned, and delivered by a dedicated team of drivers.



### PHARMACISTS: 2ND REVIEW

We go above and beyond the required prescription review process with a second review by our pharmacists who verify the accuracy and safety of each order using knowledge and state-of-the-art verification technology.



### PHARMACY TECHNICIANS

Certified and licensed technicians use technology to safely prepare bulk medicines and fill bubble cards with prescribed medications.